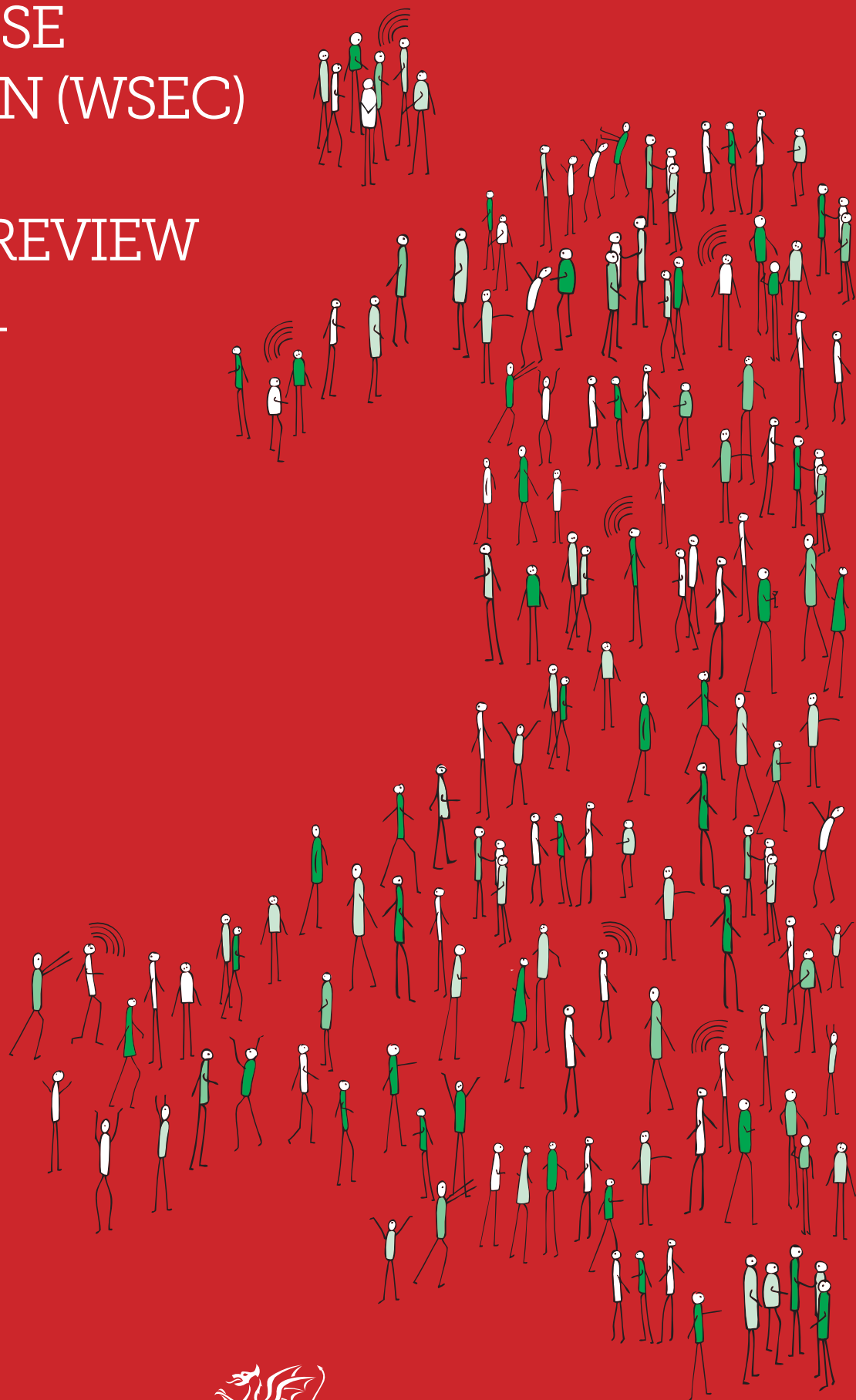


THE WELSH SOCIAL ENTERPRISE COALITION (WSEC)

ANNUAL REVIEW 2010 - 2011



THE WELSH SOCIAL ENTERPRISE COALITION

We are an independent membership organisation and the main representative body for Welsh social enterprise. Our members are at the heart of everything we do. From offices in North and South Wales we support the development of the social enterprise sector in Wales and its contribution to a strong, sustainable and inclusive Welsh economy.

RAISING AWARENESS

We promote social enterprise and the benefits it offers to the wider Welsh community including the potential in these challenging economic times for it to reach out to the economically inactive or disadvantaged, create sustainable jobs and contribute to community regeneration.

CREATING THE RIGHT ENVIRONMENT

As a strategic partner of the Welsh Government we work to create an enabling political and legislative environment in which Welsh social enterprise can thrive by engaging with relevant public and private sector bodies, evidencing its benefits and representing its views.

ACCESS TO SUPPORT AND ADVICE

Working with partner organisations across the private, public and third sectors we help Welsh social enterprise access the high quality business support and advice it needs to grow its contribution to the Welsh economy.

BUILDING NETWORKS

Through events and other networking opportunities we help social enterprises connect with each other, support organisations and other relevant stakeholders and exchange views and ideas, build new relationships and develop new opportunities.

WHAT IS SOCIAL ENTERPRISE?

A social enterprise is a “business with primarily social objectives, whose surpluses are principally reinvested for that purpose in the business or in the community rather than being driven by the need to maximise profit for shareholders and owners”*. There is no single legal model and a social enterprise may equally take the form of a company limited by guarantee or a community interest company, amongst others.

Today there are social enterprises operating in almost every sector in Wales. It is estimated that there are approximately 3,000 businesses carrying out social enterprise activity in Wales with a combined turnover of in excess of £2.2 billion ** – a significant contribution to the Welsh economy. At the heart of each is a commitment to a social purpose.

* Source: Department for Trade & Industry, UK Government, 2002

** Welsh Government social enterprise mapping exercise, 2008



Edwina Hart AM visiting Pack-IT

CHAIR'S STATEMENT



I am proud to have been the Chair of the Welsh Social Enterprise Coalition during its formative first year. We live in tough times and the “credit crunch” has meant that the WSEC has been born into a maelstrom of tension. Businesses generally are suffering incredible pressures

as resources become scarcer and more expensive and public spending is cut.

However, social enterprise is my passion and I am convinced that it has a crucial role to play in the economic recovery. John and I have seen some fantastic examples of social enterprise at work in Wales.

People that run and work in social enterprises are often described as passionate, tireless and focussed. They aren't people that take no for an answer or accept that anything is impossible and together we are striving to make sure the voice of social enterprise is heard.

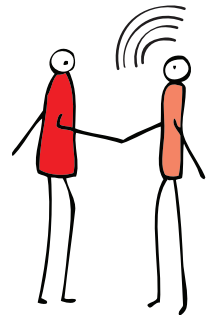
A key event during our first year has been the transfer of responsibility for social enterprise within the Welsh Government to the Department for Business, Enterprise, Technology and

Science. This is something we had hoped for and we can rest assured that the Minister for Business, Enterprise, Technology & Science, Edwina Hart AM will wield her considerable influence in support of the development of social enterprise.

Personally I have always believed that Social Enterprise is THE business model for sustainability and I will be campaigning in whatever way I can to make our collective voice heard.

I hope you will join me in raising a glass to the future of our endeavours in Wales.

Mal Williams
Chair



CEO'S STATEMENT



We are pleased to present to you “The Welsh Social Enterprise Coalition Annual Review 2010/11” – a snapshot of our first year of operation – and what an interesting and challenging year it has been!

Since the WSEC was established last year, with the support of the Welsh Government, we have quickly gained recognition as an independent membership organisation that is the collective voice for the many different types of Welsh social enterprise.

We've been on quite a journey this year! Setting up a new organisation from scratch, establishing offices in North and South Wales and travelling throughout Wales to meet and talk to as many social enterprise leaders as possible – those people on whose behalf we work – to strengthen relationships that will bring the sector closer together, listen to their views and offer help and guidance when it's required.

Our role is simple. We represent the needs and interests of Welsh social enterprises and support the development of the social enterprise sector in Wales and its contribution to a strong, sustainable and inclusive Welsh economy. We do this in a number of ways – we research, develop policy, campaign, help to build networks, share knowledge and raise awareness of social enterprise and what it can achieve.

Despite the difficulties and the economic doom and gloom, the time is ripe for social enterprise.

We are proud to have a direct channel of communication with the Minister

for Business, Enterprise, Technology & Science, Edwina Hart AM, who recently dissolved the Social Enterprise Ministerial Advisory Group in favour of meeting regularly with the WSEC as the national representative body for social enterprise in Wales.

We will continue to work hard with other social enterprise support agencies and partners to encourage social innovation, the creation of an enabling environment and a culture in which social enterprise is seen as a serious contributor to the Welsh economy.

The Welsh Social Enterprise Coalition is the voice of its membership. This is what really makes the Coalition, its members – all those unique individuals and organisations that work hard to make life better for those who need that extra bit of support. Together significant change can be achieved and we very much look forward to further working for and with you.

John Bennett
Chief Executive

A YEAR IN THE LIFE OF WELSH SOCIAL ENTERPRISE

CASE STUDY

CAIA PARK PARTNERSHIP, WREXHAM

www.caiapark.org



Caia Park Partnership has been providing the local community of Caia Park in Wrexham with much needed training, support and advice services including day care and meals on wheels for over 15 years. It is a registered charity which now employs over 75 staff of which over 80% are local residents and benefits from the support of over 150 volunteers who regularly give their time at the Partnership.

“It’s great that social enterprises in Wales are finally gaining a voice. WSEC has an opportunity to make a real difference and being a member has seen us access this first hand through their great support and encouragement. They are really taking the trouble to find out what issues face social enterprises in Wales by getting to know us and other organisations across Wales and to strengthen the network which is so important in this sector.”

Alison Hill, Chief Officer, CAIA Park Partnership

CASE STUDY

THE GLYNNEATH TRAINING CENTRE, NEATH, PORT TALBOT

www.glynneathtc.org.uk



The Glynneath Training Centre (GTC) provides education, training and a wide range of other services to the community of Glynneath, South Wales. The organisation also has The Fane Arts Centre – a purpose-built Arts Centre, which holds exhibitions, craft workshops, folk nights and poetry readings as well as hosting a wide range of craft courses; Rompers Nursery providing childcare for working parents; Revive charity shop selling reused items and The Java Bean Café is the trading arm of the organisation. All profits made by the cafe are gifted back into the charity, which the charity uses to run its activities for the benefit of the whole community.

“I recently called upon WSEC’s services when our organisation was experiencing difficulties with a funding application and I knew that I would benefit from asking for their advice. I would have no hesitation in asking for the WSEC’s help in the future as I feel they are a great support and ambassador for our sector.”

Pauline Morgan, Glynneath Training Centre

CASE STUDY

DWR CERIST, SNOWDONIA

www.dwrcerist.com



Dŵr Cerist has been extracting and bottling water from the ancient spring at Llawr Cae, Dinas Mawddwy since 1989. It employs 3 people and gives opportunities for another 5 individuals to gain vocational experiences. Dŵr Cerist is an associate of Agoriad Cyf which was established in 1992 with the objectives of developing the employment possibilities for disabled and disadvantaged people.

“Dwr Cerist has ambitious growth plans and knowing that the support of the WSEC is behind us is something that we feel that we can definitely be involved with and benefit from in the future.”

Sioned Watson Jones, Employment Officer

CASE STUDY

RHONDDA LIFE, THE
RHONDDA VALLEYS

www.rhonddalife.com



Rhondda Life Ltd. was founded by three organisations Ferndale Rugby Club, Blaenllechau Community Regeneration and The Morlais Choir, with the collective vision of establishing the Rhondda as a prime tourist destination. Rhondda Life now runs the Ferns Restaurant, Sports Bar and the Sir Stanley Baker Lounge from a new £1.3 million building. Phases two and three of this social enterprise are comprised of a Wales Museum of Rugby and a twenty bed three star hotel. The overall objective is to contribute towards the transformation of the social and economic capital of the Rhondda through employment and community revitalisation.

John Asquith, Chair of Rhondda Life

CASE STUDY

NORMAN
INDUSTRIES,
HAVERFORDWEST,
PEMBROKESHIRE

Norman Industries was set up in 1977 by Pembrokeshire County Council and is a manufacturer and supplier of high quality furniture made by people from the local community that have disabilities or disadvantages. The organisation is part of Pembrokeshire Council's supported employment programme and exists to help its employees achieve greater independence and self-esteem through vocational training and employment. Most recently, Norman Industries has been working with the COASTAL project, which is part funded by the European Social Fund through the Welsh Government, to develop and deliver a wider range of NVQ training to people with disability.

"The support from WSEC has given us the courage to explore options to become a fully independent social enterprise. The team's enthusiastic but down to earth advice has helped us to present our case in a realistic but engaging way and has enabled us to gain support across the organisation for this potentially exciting change."

Karen Davies, Project Manager,
COASTAL Norman Industries

CASE STUDY

VISION 21 (CYFLE
CYMRU)

Vision 21 (Cyfle Cymru) provides quality accredited training across eighteen Social Enterprises and has been doing so for 23 years! Two new Enterprises have been developed during the past year where, in partnership with United Welsh Housing Association, Vision 21 is running the restaurant facilities in two new Extra Care Schemes, one based in Caerphilly and the other in Blaenau Gwent.

"We have been, along with others, at the forefront of developing the Social Enterprise sector and will continue to develop a range of opportunities for students with a disability in Wales.

This drive is further supported by the establishment of the Welsh Social Enterprise Coalition that should be congratulated for the pioneering work achieved to date and for setting the scene for this essential and vital sector for Wales."

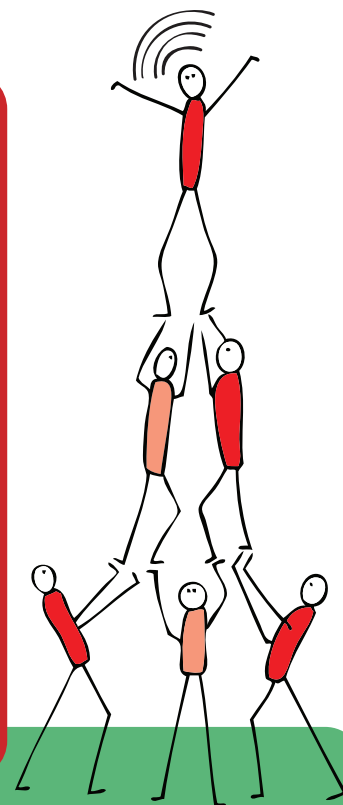
Barry Shiers MBE, Chief Executive,
Vision 21 (Cylfe Cymru)



AWARD WINNING YEAR FOR VI-ABILITY

Vi-Ability has scored a hat trick of awards this year. Having won Best Social Enterprise Start-Up of the Year at the Social Enterprise Wales Awards, the team went on to win the UK National Social Enterprise Start-Up Award at the National Social Enterprise Awards. This was followed by an Inspire Wales Award given to its founder, Kelly Davies.

Vi-Ability tackles issues of economic inactivity and youth disengagement through its involvement in community football and is run by Kelly, an ex Arsenal and Liverpool Ladies football player and former Welsh International with 36 full caps.



WSEC MEMBERS TAKE PART IN ANNUAL SOCIAL ENTERPRISE CONFERENCE 2011

WSEC Board Members, Brian Popsys of Beacons Creative and Liz Burnett, who is Head of the Social Entrepreneurship Hub at Glamorgan University (pictured) were both excited to speak at this year's Social Enterprise Wales Conference in Swansea. Organised in conjunction with the Wales Co-operative Centre and attended by nearly 250 delegates the flagship conference for Welsh social enterprise covered hot topics for the sector and brought together social enterprise practitioners with policy makers and recognised experts.



AND THE OUTSTANDING IMPACT AWARD GOES TO...

WSEC was delighted to win a Global Entrepreneurship Week 'High Impact Award' alongside the Wales Co-Operative Centre for organising the Social Enterprise Wales Conference 2011. (Pictured - John Bennett with Derek Walker, CEO of Wales Co-Operative Centre.)



HELPING CREATE AN ENVIRONMENT IN WHICH SOCIAL ENTERPRISE CAN THRIVE

One of our key objectives is to help create a supportive and enabling environment for Welsh social enterprise by participating in the policy making process.

We have therefore sought and successfully obtained representation on relevant panels, committees and other bodies including the:

- **Council for Economic Renewal** – the Welsh Government’s chief forum for business, social enterprise and trade unions to advise and help inform economic and business policies in Wales. Chaired by the First Minister.
- **Procurement Supplier Board** – which brings procurers, commissioners and suppliers together to help improve public procurement policy in Wales.
- **Third Sector Partnership Council** – a consultative body for Third Sector organisations and public bodies on the implementation of the Third Sector Scheme, and an avenue for Third Sector organisations to influence the Welsh Government on issues that affect their area.
- **National Regeneration Panel** – which provides expert advice and guidance to ensure that regeneration projects in Wales get the full benefit of their investments and to oversee the implementation of the Welsh Government’s Framework for Regeneration Areas.

Over the last eighteen months we have regularly communicated the benefits of social enterprise and its views through our participation in consultation exercises and in giving evidence to Welsh Assembly committees. We have also met with and arranged visits to social enterprises by Welsh Government Ministers, Welsh Assembly Members and officials.

DID YOU KNOW

We are on twitter? @WelshSec



GOVERNANCE

The Welsh Social Enterprise Coalition ('the Company') is a private company limited by guarantee and not having a share capital.

We are committed to a high standard of governance and to a high standard of conduct in our dealings with our members and other stakeholders. Responsibility for the management of the Company's affairs lies with the Board of Governance comprising the Company's Chief Executive Officer and fourteen non-executive Directors duly elected by and from the Company's membership. The Board of Governance meets regularly throughout the year to deal with areas including formulating, reviewing and approving strategy, budgets and senior personnel appointments.

The individuals who served as Directors and members of the Board of Governance during the period 9th November 2010 to 6th December 2011 were:

J. A. Bennett

Chief Executive
Welsh Social Enterprise Coalition

A. M. Bird

Executive Chair
Co-operatives and Mutuals Wales

E. Burnett

Head of Social Entrepreneurship Hub
University of Glamorgan

A. Crocker MBE

Managing Director
Track 2000

E. M. Jones

Chief Executive
Antur Waunfawr

K. J. Jones

Chief Executive Officer
Gorseinon Development Trust

S. Leonard

Chief Executive
Social Firms Wales

B. J. McManus

Managing Director
Dee-Tex Project

V. B. Pold

Policy Manager
Chwarae Teg

B. P. J. Popsys

General Manager
Beacons Creative Wales

J. A. Sims

Chief Executive
Pembrokeshire Frame Ltd

D. Walker

Chief Executive Officer
Wales Co-Operative Centre

M.F. Williams (Chair of WSEC)

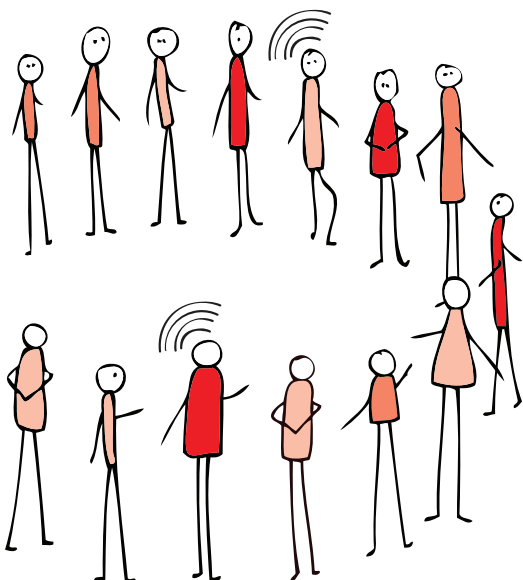
Director
Cylch / Cleanstream Group CIC

P. M. Williams

Director
Development Trust Association Wales

M. S. White

Regional Director Wales
The Charity Bank Ltd

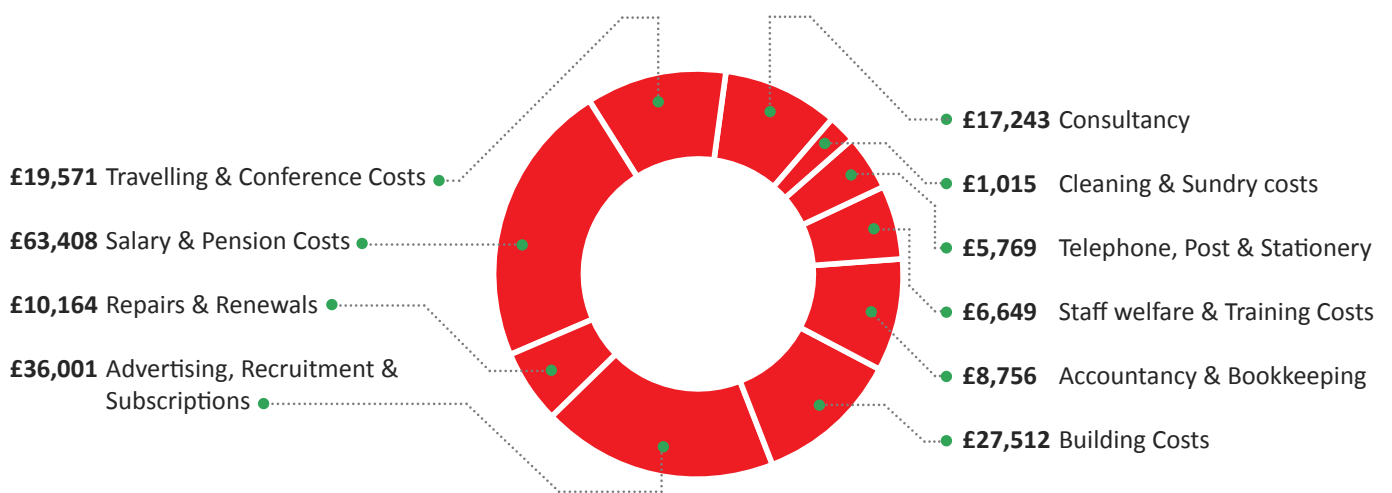


The Company's registered number is 06964080 (England and Wales) and its registered office is 9 Drake Walk, Brigantine Place, Cardiff, CF10 4AN.

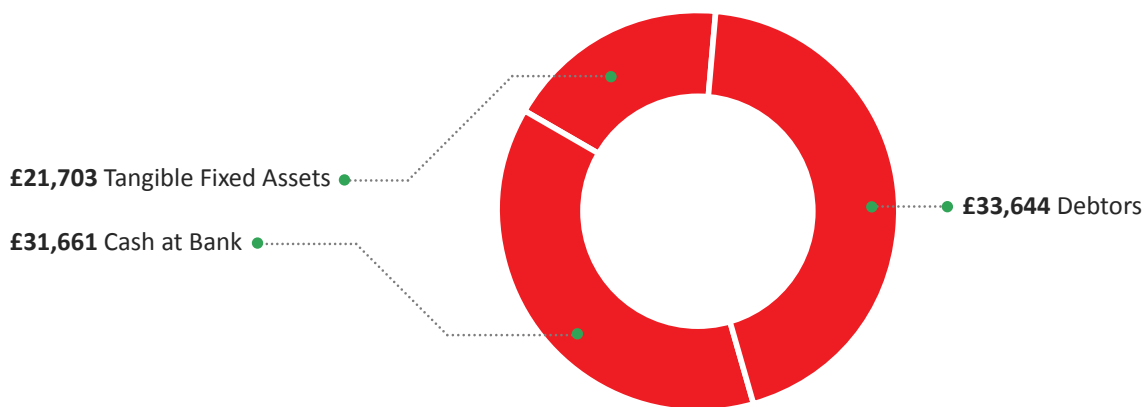
FINANCE

Our financial year ends on the 31st March. The financial information below is extracted from the audited accounts for the year ended 31 March 2011.

EXPENDITURE



ASSETS



YOUR MEMBERSHIP... JOIN US!

Join us and become part of an exciting, growing pan-Wales network. Social enterprises that operate in and have their sole or head office in Wales can apply for full membership whilst associate membership is available on a discretionary basis to other organisations considered to support our work. As a member you'll help us be a stronger voice for Welsh social enterprise and enjoy a wide range of additional benefits.

GET INVOLVED!

Our members are at the heart of everything we do and help shape our agenda through regular consultation exercises and focus groups. All our members are members within the meaning of section 112 of the Companies Act 2006. Full members have voting rights at our general meetings and all members are eligible for election to our Board of Governance.

MARKETING SUPPORT

Members can showcase their businesses in our Members Directory and gain exposure through being a 'Featured Member' on our website. They may also benefit from increased opportunities for local and national media coverage. We hold a number of events each year to which members are invited and members benefit from these and other opportunities to connect with social enterprises, support organisations and other relevant stakeholders and exchange views and ideas, build new relationships and develop new opportunities.

HELP ACCESSING ADVICE AND SUPPORT

We help our members access high quality business support and advice in relation to matters such as accessing financial assistance, how to effectively tender for contracts and new developments in public policy relevant to social enterprises. Our online forum allows members to access to the latest news and updates from the world of social enterprise and connections with the wider social enterprise movement.

YOUR WSEC TEAM

John Bennett
Chief Executive



Social entrepreneur, John is experienced in working in the UK and internationally to help develop social enterprise and Social

Firms for disabled and disadvantaged people and is a founding member and former Chair of Social Firms Wales. He is also Chair of the Pack-IT Group, a Welsh multi-award winning social enterprise. John is a member of the Institute of Directors, a fellow of the Chartered Management Institute and the Royal Society of Arts and is a graduate of Common Purpose.

Darren Griffiths
Policy and Communications Officer



Darren is a graduate of the University of Nottingham in International Relations & Politics. He joined WSEC in August 2011

following a number of years working in policy and research roles in both the UK Parliament and National Assembly for Wales.

Sue Wood
Administrative Assistant



Sue joined WSEC in January 2011. Her busy role is personal assistant to John and she also covers all the administrative duties for the organisation. She has previously worked in the Welsh Office / Welsh Government in a variety of roles.

GET IN TOUCH!

Give us a call on **029 2048 6379**
Visit us at: www.welshsec.org.uk
E-mail us at: sue.wood@welshsec.org
Find us on Twitter ([@WelshSec](https://twitter.com/WelshSec)) and Facebook (facebook.com/WelshSEC)

COMING UP IN 2012...

We are looking to achieve a lot more in the next year, here's a sample of what's coming up, please sign up to our newsletters to receive further information.

- An Annual Survey in which members feed into WSEC consultation submissions through the use of questionnaires and policy forums.
- Events will be an important part of our work going forward next year and we in the process of planning a number of FREE events for members including policy forums, receptions, workshops, trade fairs and conferences.
- A series of WSEC focus groups across Wales. Keep an eye out for one coming near you!

